



[sign]CurrentDate  
[sign]TrackingNumber

Tracking Number: 412227

Authorization Number: 5050

**REGISTERED MAIL**

COMOX VALLEY REGIONAL DISTRICT  
770 Harmston Avenue  
Courtenay BC V9N 0G8

Dear Operational Certificate Holder:

Enclosed is amended Operational Certificate 5050 issued under the provisions of the *Environmental Management Act*. Your attention is respectfully directed to the terms and conditions outlined in the operational certificate. An annual fee will be determined according to the Permit and Approval Fees and Charges Regulation.

This operational certificate does not authorize entry upon, crossing over, or use for any purpose of private or Crown lands or works, unless and except as authorized by the owner of such lands or works. The responsibility for obtaining such authority rests with the operational certificate holder. It is also the responsibility of the operational certificate holder to ensure that all activities conducted under this authorization are carried out with regard to the rights of third parties, and comply with other applicable legislation that may be in force.

Information and guidance related to the operational certificate including regarding the *Environmental Management Act*, regulations, waste discharge authorizations, landfills, Landfill Criteria, environmental monitoring, sampling procedures, analytical procedures, compliance with a waste discharge authorization, routine reporting, non-compliance notification, and non-compliance reporting, etc., is available on the Ministry web page.

When a spill or the risk of a spill occurs, the responsible person (spiller) must report it immediately by calling 1-800-663-3456 in accordance with the Spill Reporting Regulation.

Pursuant to Section 16 of the *Environmental Management Act*, the director has amended authorization 5050.

This decision may be appealed to the Environmental Appeal Board in accordance with Part 8 of the *Environmental Management Act*. An appeal must be delivered within 30 days from the date that notice of this decision is given. For further information, please contact the Environmental Appeal Board at (250) 387-3464.

Please be reminded that the director may, for the protection of the environment in accordance with Section 16 of the *Environmental Management Act*, require the operational certificate holder to do one or more of the following at any time:

- repair, alter, remove, improve or add to existing works, or construct new works, and submit plans and specifications for works specified in this authorization.
- conduct monitoring, and may specify procedures for monitoring and analysis, and procedures or requirements respecting the handling, treatment, transportation, discharge or storage of waste.
- provide security in the amount and form, and subject to the conditions, specified by the director.
- conduct studies and report information in accordance with the specifications of the director.
- recycle certain wastes and recover certain reusable resources, including energy potential from wastes, in accordance with the specifications of the director.
- submit copies of reports and notifications to specified Indigenous Groups, within specified timelines, in accordance with the specifications of the director.

Yours truly,

[sign]image:SigningAuthoritySignatureId

[sign]SignatureBlockFirstLine  
for Director, *Environmental Management Act*  
Authorizations



**MINISTRY OF ENVIRONMENT  
AND PARKS**

**OPERATIONAL CERTIFICATE**

5050

*Under the Provisions of the Environmental Management Act*

**Comox Valley Regional District**

**770 Harmston Avenue  
Courtenay BC V9N 0G8**

is authorized to manage waste and recyclable material from the Comox and Strathcona Regional Districts and environs at the Facility located in the Village of Cumberland, British Columbia, provided that the operational certificate holder complies with all provisions of this operational certificate. Unless a contrary intention appears, the provisions of this operational certificate are requirements that must be complied with regardless of whether the operational certificate holder introduces waste to the environment. Contravention of any of these requirements, and any discharge of waste while out of compliance with any provisions of this operational certificate, is a violation of the *Environmental Management Act*, and may lead to prosecution.

This operational certificate supersedes and replaces all previous versions of Operational Certificate 5050 issued under Section 28 of the *Environmental Management Act*.

**GLOSSARY**

Capitalized terms referred to in this authorization are defined in the Glossary below. Other terms used in this authorization have the same meaning as those defined in the *Environmental Management Act*, applicable regulations, and the Landfill Criteria.

DRAFT June 7, 2025 for review

“Attractant” means food or food waste, compost, carcass or part of an animal, fish, or other meat, or other waste or garbage, that could attract bears, birds, rodents, insects, vectors or wildlife, but does not include grass, leaves, weeds, branches and woodwaste;

“Buffer Zone” means the area between the landfill footprint of the Landfill and the Facility Site Boundary;

“Closed Landfill” means the authorized works in section 1.2 of this operational certificate.

“Electric Enclosure” means a bear-proof electric fence and electric gate(s), that surround the enclosed area;

“Facility” means the Comox Valley Waste Management Centre including all facilities and works on the Facility Site including the Landfill, Stormwater Management Works, Leachate Collection, Treatment and Discharge Works, Landfill Gas Management Works, Facility Entrance, and Electric Enclosures;

“Facility Entrance” means the authorized works in section 1.6.1 of this operational certificate;

“Facility Site” means the location of the Facility in section 1.7.1 of this operational certificate;

“Facility Site Boundary” means the perimeter boundaries of the Facility Site;

“Fugitive Emissions” means the release of air contaminants from sources other than the authorized point of discharge that occur during normal operations at the Facility, such as leakage from works or the release of particulates such as dust, but does not include spills to the environment as defined in the Spill Reporting Regulation or the release of air contaminants as a result of the failure of any works at the Facility;

“Landfill” means the authorized works in section 1.1.4 of this operational certificate;

DRAFT June 7, 2025 for review

"Landfill Criteria" means the Landfill Criteria for Municipal Solid Waste Second Edition June 2016;

"Landfill Gas Management Facilities" means the authorized works in section 1.4.4 of this operational certificate

"Leachate Management Works" means the authorized works in section 1.3.5 of this operational certificate;

"Province" means His Majesty the King in right of British Columbia;

"Qualified Professional" means an applied scientist or technologist specializing in an applied science or technology applicable to the duty or function, including, if applicable and without limiting this, agrology, biology, chemistry, engineering, geology or hydrogeology and who:

- a) is registered with the appropriate professional organization, is acting under that organization's code of ethics and is subject to disciplinary action by that organization, and,
- b) through suitable education, experience, accreditation and/or knowledge, may be reasonably relied on to provide advice within their area of expertise.

"Regulatory Document" means any document that the operational certificate holder is required to cause to be prepared, prepare or submit to the director or the Province, pursuant to: (i) this authorization; (ii) any regulation made under the *Environmental Management Act* that regulates the Facility described in this authorization or the discharge of waste from that Facility; or (iii) any order issued under the *Environmental Management Act* directed against the operational certificate holder that is related to the Facility described in this authorization or the discharge of waste from that Facility;

"Soil" means soil in which the concentration of all substances is less than the lowest applicable industrial land use standard referred to in section 41(1)(a) of the Contaminated Sites Regulation;

"Stormwater" means water from precipitation including rainwater and meltwater, but does not include leachate;

DRAFT June 7, 2025 for review

“Stormwater Management Works” means the authorized works in section 1.5.3 of this operational certificate.

1. **AUTHORIZED DISCHARGES AND WORKS**

1.1 **Landfill**

This section applies to the discharge of waste to the landfill footprint of the Landfill. The site reference number for this discharge is E211100.

1.1.1 The maximum rate of waste discharge to the landfill footprint is:

- (a) 80,000 tonnes per calendar year of the sum of the waste in sections 1.1.2(a) and (b) of this operational certificate,
- (b) not determined for Soil, and,
- (c) as specified by the director for waste pursuant to section 1.1.2(d) of this operational certificate.

1.1.2 The characteristics of the discharge to the landfill footprint must be:

- a) municipal solid waste,
- b) controlled waste consisting of semi-solid sludge and dead animals including road kill, domestic pets, wildlife, and mortalities that cannot be disposed of in accordance with the Code of Practice for Agricultural Environmental Management,
- c) Soil, and/or,
- d) waste as authorized by the director,

but does not include:

- e) hazardous waste except to the extent expressly authorized pursuant to the *Environmental Management Act* section 7(2),
- f) waste that contains free liquids as determined by the United States Environmental Protection Agency SW-846 Test Method 9095B: Paint Filter Liquids Test, except as authorized pursuant to section 1.1.2(d) of this operational certificate, and,
- g) Waste and recyclable material prohibited by the director.

DRAFT June 7, 2025 for review

- 1.1.3 The waste discharge is authorized to the landfill footprint of the Landfill approximately located as shown on Site Plan A.
- 1.1.4 The authorized works associated with this discharge are a landfill footprint, with landfill base liner, with a maximum area of 15.66 hectares, final cover, and related appurtenances, approximately located as shown on Site Plan A.
- 1.1.5 The operational certificate holder must ensure that the authorized works associated with this discharge, are complete and fully operational in accordance with the most recent Design, Operations and Closure Plan (DOCP).

## 1.2 **Closed Landfill**

This section applies to the Closed Landfill.

- 1.2.1 Waste discharge to the Closed Landfill is not authorized.
- 1.2.2 The authorized works are a 9.8 hectare closed landfill footprint without a landfill base liner, with final slopes between 4 and 33%, final cover system including a geomembrane of minimum 1.5 mm thickness, sand, soil, topsoil, vegetation, and related appurtenances approximately located as shown on Site Plan A.
- 1.2.3 The operational certificate holder must ensure that the authorized works are complete and fully operational at all times.

## 1.3 **Leachate**

This section applies to the discharge of leachate from the Closed Landfill, and the Landfill, to the ground. The site reference number for the leachate discharge from the Closed Landfill is E338516. The site reference number for the leachate discharge from the Landfill is E338518.

DRAFT June 7, 2025 for review

- 1.3.1 The maximum discharge rate of leachate that is not collected from the Closed Landfill is not determined.
- 1.3.2 The characteristics of the leachate discharge that is not collected from the Closed Landfill is typical of leachate from a municipal solid waste landfill.
- 1.3.3 The operational certificate holder may, or the director may require the operational certificate holder to, collect leachate from the Closed Landfill, recirculate it into the waste in the Landfill, and/or convey it to the Leachate Management Works.
- 1.3.4 The operational certificate holder must collect leachate from the Landfill and landfill gas condensate from the Closed Landfill and the Landfill, may recirculate it into the waste in the Landfill, and must convey it to the Leachate Management Works.
- 1.3.5 The authorized works associated with this discharge are leachate collection, storage, treatment, and discharge works including collection works, primary and backup pumps, equalization ponds with base liner, treatment works, transport works, and infiltration bed, approximately located as shown on Site Plan A and in accordance with the most recent DOCP.
- 1.3.6 The equalization ponds must have a base liner that includes an upper primary HDPE double-sided textured geomembrane (minimum 1.5 mm thickness), a geocomposite leak detection layer, and a lower secondary composite HDPE double-sided textured geomembrane (minimum 1.5 mm thickness) and geosynthetic clay liner (hydraulic conductivity less than or equal to  $1 \times 10^{-7}$  cm/s).
- 1.3.7 The maximum annual average rate of discharge of treated leachate effluent to the infiltration bed is 275 cubic metres per day.

DRAFT June 7, 2025 for review



- 1.3.8 The characteristics of the treated leachate effluent discharge, immediately before discharge to the infiltration bed, must be equivalent to or better than:

Substance	Minimum or Maximum	Limit (Total)	Unit
pH	Minimum Maximum	6.5 8	pH
5-day Biochemical Oxygen Demand	Maximum	25	mg/L
Total Suspended Solids	Maximum	25	mg/L
Total Nitrogen	Maximum	25	mg/L
Chloride	Maximum	700	mg/L
Boron	Maximum	10	mg/L
Copper	Maximum	0.25	mg/L
Iron	Maximum	10	mg/L
Manganese	Maximum	1.5	mg/L
Zinc	Maximum	5	mg/L

- 1.3.9 The operational certificate holder must ensure that the authorized works associated with this discharge are complete and fully operational in accordance with the most recent DOCP period.

#### 1.4 Landfill Gas

This section applies to the discharge of landfill gas, and from landfill gas management facilities from the Closed Landfill and the Landfill to the air. The site reference number for the discharge of landfill gas is E338519. The site reference number for the discharge from landfill gas management facilities is E338520.

- 1.4.1 The maximum discharge rate of landfill gas, and from landfill gas management facilities is not determined.

- 1.4.2 The characteristics of the discharge are typical of landfill gas, and from landfill gas management facilities, from a municipal solid waste landfill.
- 1.4.3 Landfill gas is authorized to be discharged to the air as Fugitive Emissions. The discharge from landfill gas management facilities including landfill gas venting, collecting, storing, flaring, and use facilities and related Fugitive Emissions, is authorized to be discharged to the air.
- 1.4.4 The authorized works associated with this discharge are landfill gas management facilities in accordance with the Landfill Gas Management Regulation and the most recent DOCP.
- 1.4.5 The operational certificate holder must ensure that the authorized works associated with this discharge are complete and fully operational in accordance with the Landfill Gas Management Regulation and the most recent DOCP.

## 1.5 **Stormwater**

This section applies to the management of Stormwater from the Facility to the ground and water. The site reference number for this discharge is E338521.

- 1.5.1 The maximum rate of Stormwater discharge is not determined.
- 1.5.2 The characteristics of the Stormwater discharge are typical of Stormwater from a municipal solid waste landfill.
- 1.5.3 The authorized works associated with this discharge are run-on control ditches, runoff interception ditches, mid-slope interception ditches, side ditches, perimeter ditches, culverts, retention infiltration ponds, approximately located as shown on Site Plan A.

DRAFT June 7, 2025 for review

- 1.5.4 The operational certificate holder must ensure that the authorized works associated with this discharge are complete and fully operational in accordance with the most recent DOCP.

## 1.6 **Facility Entrance**

This section applies to the Facility Entrance.

- 1.6.1 The authorized works are sign(s), perimeter fencing, gate(s), weigh scale, scale house, waste and recyclable material drop-off and storage facilities, and related appurtenances approximately located as shown on Site Plan A and in accordance with the most recent DOCP
- 1.6.2 The operational certificate holder must ensure that the authorized works are complete and fully operational in accordance with the most recent DOCP.

## 1.7 **Location of Facility and Authorized Discharges**

This section applies to the location of the Facility and the authorized discharges.

- 1.7.1 The location of the Facility and authorized discharges is Lot A, Section 26, 27, 34, and 35, Township 10, Comox Land District, Plan EPP111857; PID: 031-451-918, approximately located as shown on Site Plan A.

## 2. **GENERAL REQUIREMENTS**

### 2.1 **General Provisions**

Where this Authorization provides that the director may require an action to be carried out, the operational certificate holder must carry out the action in accordance with the requirements of the director.

DRAFT June 7, 2025 for review

## 2.2 **Regulatory Documents**

- 2.2.1 The operational certificate holder must retain all Regulatory Documents for a period of at least 10 years after they are made.
- 2.2.2 If requested by a director or an officer, the operational certificate holder must submit the requested Regulatory Documents to the director or officer within 14 days of the request.

## 2.3 **Additional Requirements**

Subject to the provisions of the *Environmental Management Act* for amendments, the director may require the operational certificate holder to:

- 2.3.1 Conduct studies and report information including additional, amended or improved plans, specifications, reports, studies and information, specified by the director in the manner specified by the director.
- 2.3.2 Implement actions in accordance with the Regulatory Documents and additional actions as specified.
- 2.3.3 Repair, alter, remove, improve or add to existing facilities and works, or construct new facilities and works, at the Facility, as specified.

## 3. **OPERATING AND PERFORMANCE REQUIREMENTS**

### 3.1 **Design Operations and Closure Plan (DOCP)**

- 3.1.1 The current DOCP is the Design, Operations and Closure Plan dated March 2016 by Tetrattech EBA.
- 3.1.2 The operational certificate holder must implement the most recent DOCP and design, construct, operate, inspect, maintain,

DRAFT June 7, 2025 for review

monitor, and close the Facility, in accordance with the most recent DOCP and this operational certificate.

- 3.1.3 The operational certificate holder must cause a Qualified Professional to seal and submit an updated DOCP to the director, as necessary to keep the DOCP up to date, on or before December 31, 2025, and at least once every five years thereafter.
- 3.1.4 The updated DOCP must include the relevant information listed in the Landfill Criteria Section 10.3 DESIGN, OPERATIONS AND CLOSURE PLAN.

### **3.2 Hydrogeology and Hydrology Characterization Report (HHCR)**

- 3.2.1 The operational certificate holder must cause a Qualified Professional to seal and submit an updated HHCR, to the director, on or before December 31, 2026, and at least once every ten years thereafter.
- 3.2.2 The updated HHCR must include the relevant information listed in the Landfill Criteria, Section 10.1 HYDROGEOLOGY AND HYDROLOGY CHARACTERIZATION REPORT.

### **3.3 Construction Report(s)**

- 3.3.1 The operational certificate holder must cause a Qualified Professional to seal construction report(s) on or before 90 days after the completion of construction or modification of the landfill base, landfill base liner, leachate collection system (immediately on top of and contiguous with the landfill base liner as described in the Landfill Criteria Section 5.5 LEACHATE COLLECTION SYSTEM), leachate equalization ponds with base liner, leachate treatment works, and/or final cover.
- 3.3.2 The construction report(s) must demonstrate that the works have been constructed in accordance with this operational certificate and the most recent DOCP, include record drawings of the

DRAFT June 7, 2025 for review

constructed works, and the relevant inspection and testing reports and results, generally in accordance with the Landfill Criteria Section 10.2 CONSTRUCTION REPORT(S).

### 3.4 **Maintenance of the Facility**

- 3.4.1 The operational certificate holder must cause persons that are qualified and trained, to operate, regularly inspect, and maintain the Facility, in good working order.
- 3.4.2 The operational certificate holder must prepare documents of the qualification and training of the persons operating, inspecting and maintaining the Facility, and of Facility inspections, operation and maintenance.

### 3.5 **Water Quality**

- 3.5.1 The operational certificate holder must cause a Qualified Professional to include the following information in the Annual Operations and Monitoring Report required by section 5.4 of this operational certificate:
  - (a) Rationale and determination of the applicable water use(s), and the corresponding water quality criteria, for Stormwater, surface water and groundwater, at and beyond the Facility Site Boundary, considering relevant Ministry guidance and the water quality criteria listed in the Landfill Criteria Section 4.1 GROUNDWATER AND SURFACE WATER QUALITY.
  - (b) Comparison of the monitoring data with the water quality criteria, assessment, and determination as to whether the water quality criteria, at and beyond the Facility Site Boundary, determined under (a), were satisfied.
  - (c) If under (b), it was determined the water quality criteria, at and beyond the Facility Site Boundary, were not satisfied, a

DRAFT June 7, 2025 for review

plan that includes rationale and implementation schedule to include:

- (i) monitoring, reports, studies and/or information to determine the water quality effects from the Facility on the environment at and beyond the Facility Site Boundary, including whether pollution has occurred or is likely to occur,
- (ii) actions to mitigate water quality effects from the Facility on the environment, and/or to satisfy the water quality criteria, at and beyond the Facility Site Boundary, and,
- (iii) notification of affected neighbouring site owners.

(d) Implementation progress for the plan under (c) that was included in the preceding calendar year's Annual Operations and Monitoring Report

3.5.2 If a plan is required by section 3.5.1(c), the operational certificate holder must implement the most recent plan

### 3.6 **Landfill Gas Management**

3.6.1 The operational certificate holder must cause a Qualified Professional to include the following information in the Annual Operations and Monitoring Report required by section 5.4 of this operational certificate:

(a) Rationale and determination of the applicable landfill gas management requirements considering relevant guidance in the Landfill Criteria Section 4.2 LANDFILL GAS MANAGEMENT.

(b) Comparison of the landfill gas management and monitoring data with the applicable landfill gas management requirements determined in (a), and determination as to whether such requirements were satisfied.

(c) If under (b), it was determined the landfill gas management requirements were not satisfied, a plan that includes rationale and implementation schedule to include:

DRAFT June 7, 2025 for review

- (i) monitoring, reports, studies and/or information to determine the landfill gas effects from the Facility,
- (ii) actions to mitigate landfill gas effects from the Facility and/or to satisfy the landfill gas management requirements, and,
- (iii) notification of affected neighbouring site owners.

(d) Implementation progress for the plan under (c) that was included in the preceding calendar year's Annual Operations and Monitoring Report.

3.6.2 If a plan is required by section 3.6.1(c), the operational certificate holder must implement the most recent plan

### 3.7 **Buffer Zone**

The operational certificate holder must not landfill waste within the Buffer Zone.

### 3.8 **Electric Enclosure**

- a) The operational certificate holder must prevent bears from accessing Attractants at the Facility and from entering the Electric Enclosure.
- b) The operational certificate holder must surround all Attractants that arrive at the Facility within an Electric Enclosure, immediately upon arrival of such Attractants at the Facility.
- c) The operational certificate holder must ensure that areas of the Facility where Attractants are present, including any waste storage containers and the active landfill footprint, are surrounded by an Electric Enclosure.
- d) The operational certificate holder must ensure that the Electric Enclosure is fully operational at all times during the required operational period, except during temporary short-term periods during daylight, for maintenance, safety or operational reasons, during which time the Facility must be continuously attended and other bear-proof measures must be carried out. If snow is present during the required operational period, any electrified strands above

DRAFT June 7, 2025 for review



snow line must be isolated from the remainder of the system and energised.

- e) The required operational period is from January 1 to December 31 each year and when one or more bears are active at or near the Facility Site, or as specified by the director.
- f) This sub-section applies during the required operational period. The operational certificate holder must operate the Electric Enclosure with a minimum voltage of 6,000 volts. The operational certificate holder must inspect the entire perimeter of the Electric Enclosure once per month including for evidence of bear activity (e.g. diggings, scat, etc.) and damage, and measure the voltage of the Electric Enclosure at a minimum of one point along the Electric Enclosure each day the Facility is open. If any measurements show a voltage of less than 6,000 volts, the operational certificate holder must immediately investigate the cause of the low voltage (e.g. low battery, litter, vegetation, loose or crossed wires, broken insulators, breaks in the grounding system, etc.). The operational certificate holder must immediately correct any issues that affect operation of the Electric Enclosure in accordance with the requirements of this authorization.
- g) The operational certificate holder must ensure that all electric gates are closed when the Facility is un-attended. The operational certificate holder may leave an electric gate open while the Facility is continuously attended provided the electric gate is checked periodically for bear activity.
- h) The operational certificate holder must immediately report the presence of a bear within the Electric Enclosure, or any bear access to Attractants at the Facility, to the Conservation Officer Service.
- i) The operational certificate holder must prepare documents that demonstrate compliance with the preceding sub-sections including inspection logs, bear activity at and/or near the Facility (e.g. sightings, diggings, scat, etc.), damage, voltage measurements, issues, causes, corrective actions, the presence of a bear within the Electric Enclosure, bear access to Attractants at the Facility, and reports to the Conservation Officer Service.

#### 4. **MONITORING AND SAMPLING REQUIREMENTS**

DRAFT June 7, 2025 for review

#### 4.1 **Monitoring and Sampling Facilities**

The operational certificate holder must install and maintain, measurement, monitoring and sampling facilities for waste, leachate, Stormwater, surface water, groundwater, and landfill gas, at specified locations, in accordance with the most recent DOCP.

#### 4.2 **Monitoring and Sampling**

The operational certificate holder must carry out measurement, monitoring and sampling of waste, leachate, Stormwater, surface water, groundwater, and landfill gas, for specified substances and at specified frequencies, in accordance with the most recent DOCP.

#### 4.3 **Sampling Procedures**

The operational certificate holder must carry out sampling in accordance with the procedures described in the "British Columbia Field Sampling Manual for Continuous Monitoring and the Collection of Air, Air-Emission, Water, Wastewater, Soil, Sediment, and Biological Samples, 2013 Edition or most recent edition, or by alternative procedures as authorized by the director.

#### 4.4 **Analytical Procedures**

The operational certificate holder must carry out analyses in accordance with procedures described in the "British Columbia Environmental Laboratory Manual (2020)", or the most recent edition or by alternative procedures as authorized by the director.

#### 4.5 **Quality Assurance**

The OC holder must implement a Quality Assurance and Quality Control program in accordance with the Environmental Data Quality Assurance Regulation and guidance provided in the "British Columbia Field

DRAFT June 7, 2025 for review

Sampling Manual for Continuous Monitoring and the Collection of Air, Air-Emissions, Water, Wastewater, Soil, Sediment, and Biological Samples, 2013 Edition” or most recent edition.

#### **4.6 Electronic Upload of Data to Ministry Database**

Without limiting any requirement under this operational certificate to report information to the director, the operational certificate holder must upload the laboratory results and field measurements of all waste, leachate, Stormwater, surface water, groundwater and landfill gas monitoring programs required by this operational certificate to the ministry’s environmental monitoring results database using the appropriate site identification numbers. The operational certificate holder must upload data to the database within 60 calendar days of the end of the month during which the samples were collected.

### **5. REPORTING REQUIREMENTS**

#### **5.1 Routine Reporting**

The operational certificate holder must submit all information required to be submitted under this operational certificate by email to [EnvAuthorizationsReporting@gov.bc.ca](mailto:EnvAuthorizationsReporting@gov.bc.ca) or as otherwise instructed by the director.

#### **5.2 Non-compliance Notification**

The operational certificate holder must immediately notify the director by email at [EnvironmentalCompliance@gov.bc.ca](mailto:EnvironmentalCompliance@gov.bc.ca), or as otherwise instructed by the director, of any non-compliance with the requirements of this Authorization and must immediately take remedial action to remedy any effects of such non-compliance.

#### **5.3 Non-compliance Reporting**

DRAFT June 7, 2025 for review

The operational certificate holder must, within 30 days of any non-compliance event, submit to the director a written report that includes, but is not necessarily limited to, the following:

- a) all relevant test results obtained by the operational certificate holder related to the non-compliance,
- b) an explanation of the most probable cause(s) of the non-compliance, and,
- c) a description of remedial action planned and/or taken by the operational certificate holder to prevent similar non-compliance(s) in the future.

The operational certificate holder must submit all non-compliance reporting required to be submitted under this section by email to [EnvironmentalCompliance@gov.bc.ca](mailto:EnvironmentalCompliance@gov.bc.ca) or as otherwise instructed by the director.

#### **5.4 Annual Operations and Monitoring Report**

5.4.1 The operational certificate holder must cause a Qualified Professional to seal and submit an Annual Operations and Monitoring Report, for the preceding calendar year, to the director on or before March 31 of each year.

5.4.2 The Annual Operations Report must include the following information:

Operations Report:

- a) Tonnage discharged to the landfill footprint of each of the categories of waste listed under section 1.1.2 of this operational certificate,
- b) Leachate volumes and qualities, collected, recirculated, treated, and discharged,
- c) Remaining volume and life of the landfill footprint,
- d) Summary of DOCP implementation,
- e) Summary of significant nuisances and complaints, relevant to this operational certificate, and actions implemented,
- f) Summary of the information required by section 3.4.2 (Maintenance of the Facility) of this operational certificate,

DRAFT June 7, 2025 for review

- g) Summary of information required by section 3.8 i) (Electric Enclosures) of this operational certificate,
- h) Summary of any information submitted pursuant to section 5.2 Non-compliance Notification, and section 5.3 Non-compliance Reporting, of this operational certificate,
- i) For the next calendar year, summary of planned DOCP implementation,

Environmental Monitoring Report:

- j) Site plan(s), sampling locations, leachate, Stormwater and surface water flow paths, groundwater elevations, gradients and flow directions,
- k) Measurement, monitoring and sampling facilities, locations, frequencies, substances, sampling and analytical procedures, quality assurance and quality control,
- l) Data interpretation including information such as trend analysis, graphs and diagrams, for measurement, monitoring and sampling results,
- m) Leachate quality sampling results comparison to the standards specified in section 1.3.8 of this operational certificate,
- n) Information required by section 3.5 Water Quality, of this operational certificate,
- o) Information required by section 3.6 Landfill Gas Management, of this operational certificate,
- p) Results, conclusions, recommendations and changes to the environmental monitoring plan.

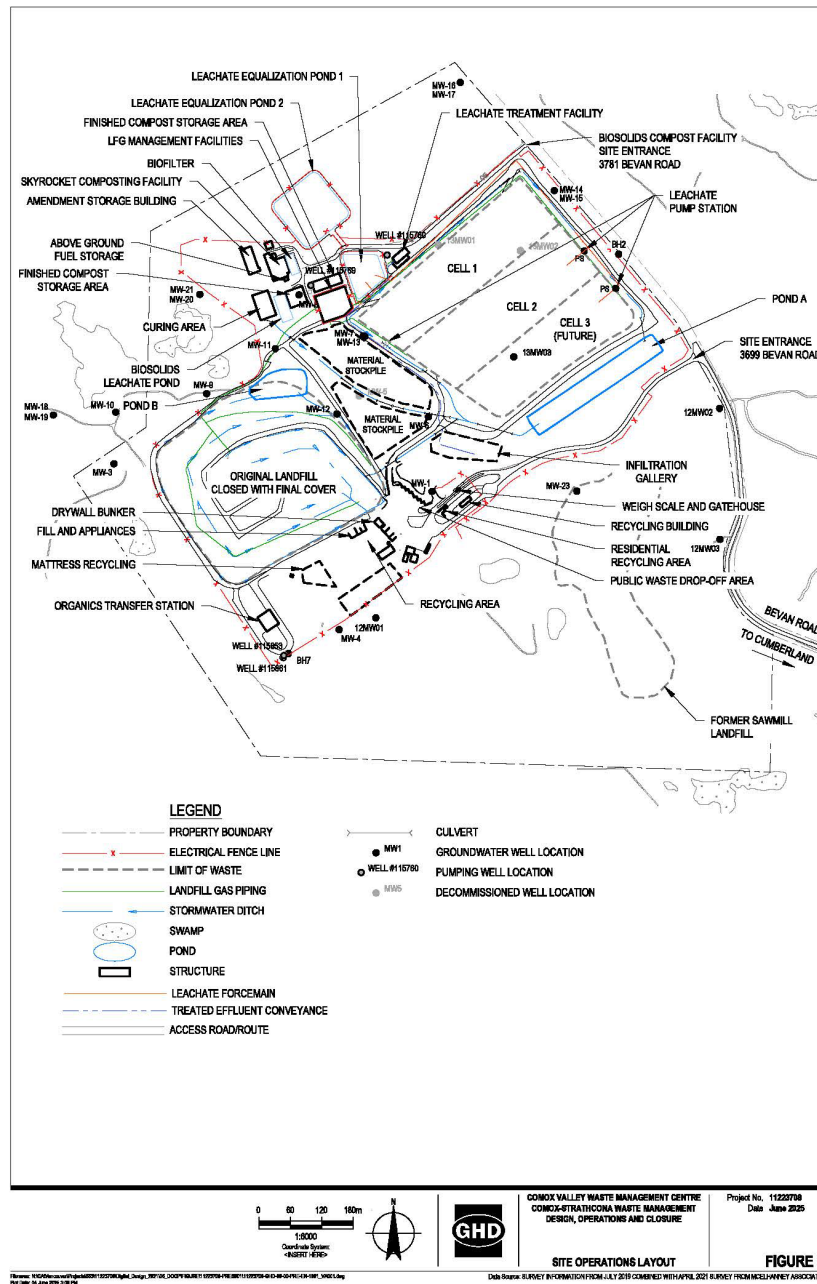
## 5.5 **Publication of Documents**

The Ministry of Environment and Climate Change Strategy publishes Regulatory Documents on its website for the purpose of research, public education and to provide transparency in the administration of environmental laws. The operational certificate holder acknowledges that the Province may publish any Regulatory Documents submitted by the operational certificate holder, excluding information that would be exempted from disclosure if the document was disclosed pursuant to a request under section 5 of the *Freedom of Information and Protection of*

*Privacy Act*, and the operational certificate holder consents to such publication by the Province.

DRAFT June 7, 2025 for review

## Site Plan A



DRAFT June 7, 2025 for review