

# WASTE MANAGEMENT OPEN HOUSE



There are some changes planned for the Campbell River Waste Management Centre and tonight we'll update you on what's to come at the facility. We've got a plan, and we're asking for your feedback to ensure that our plans reflect the needs of the community.

## ► WHAT YOU CAN EXPECT TONIGHT:

### 1. Welcome

Please sign in, create a nametag, and grab some refreshments

### 2. Review Information

Browse the information boards around the room and grab some takeaway information to learn more about the project

### 3. Ask Questions

Project team members are in the room and ready to answer your questions

### 4. Provide Feedback

Please add your comments/feedback to one of the forms provided or share your feedback with the project team members

## ► WHAT YOU WILL LEARN ABOUT TONIGHT:

- The closure plans for the landfill and its transition to a transfer station
- The plans for the Waste Management Centre in the future
- CSWM's plans to meet the requirements of the BC Landfill Gas Management Regulation



For more information visit: [cswm.ca/campbellriver](https://cswm.ca/campbellriver)



# LANDFILL TO TRANSFER STATION

**Did you know:** The Campbell River Waste Management Centre landfills 25,000 tonnes of waste per year? At 9.2 hectares in size, the landfill is getting full. A plan has been developed to see the landfill at the centre closed, capped and monitored for the long term.



▶ The Campbell River Waste Management Centre currently serves as the primary municipal solid waste disposal site for approximately **43,000 people** located in Campbell River and the surrounding communities.



▶ The landfill is **nearing capacity**, after which the site will continue to operate as a solid waste transfer station. The transfer station will act as a **waste collection point** for the Campbell River region, with collected waste to be transported to the Comox Valley Waste Management Centre located in Cumberland BC, approximately 65 km south.



▶ In order to close the landfill, CSWM is seeking approval of substituted requirements under the BC Landfill Gas (LFG) Management Regulation. The intent of the BC LFG Regulation is to **reduce greenhouse gas emissions** and optimize gas recovery from solid waste landfills. CSWM is proposing **alternative timing** to achieve the intent of the regulation in a way that aligns with the landfill closure.

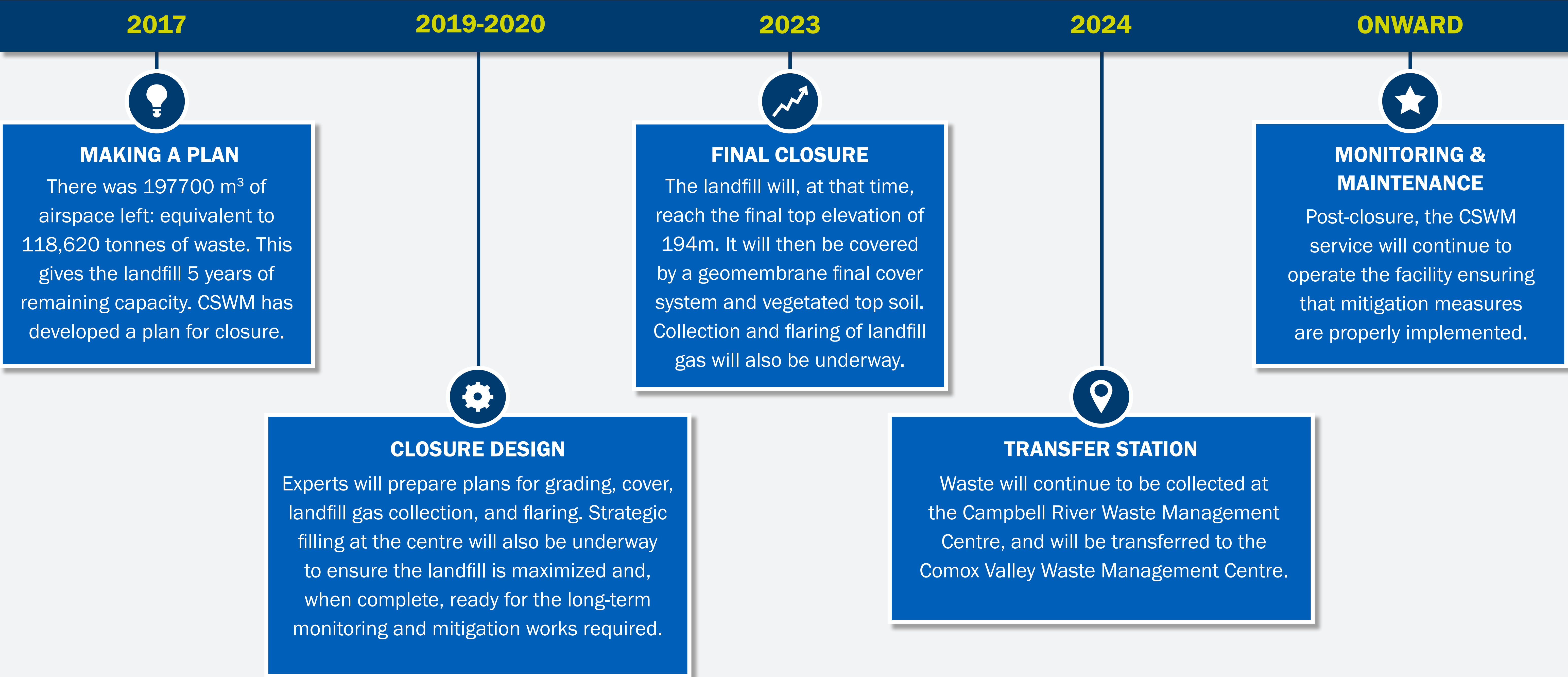




# WHAT'S TO COME



Over the next five years, there will be a lot of work underway, though not all of it will be obvious to the public. Below is a timeline of the upcoming steps as the waste management service moves towards this landfill closure.



For more information visit: [cswm.ca/campbellriver](https://cswm.ca/campbellriver)



# WHY CLOSE A LANDFILL?

Closing a landfill isn't an easy decision, but for the Comox Strathcona Waste Management Board, assessment of their service's future capacity made it clear.

## ▶ **RUNNING OUT OF ROOM**

The Campbell River landfill is nearing capacity. Planning to accommodate continued landfill operations at the site would have required new or expanded space. Landfilling waste at a single location was determined to be the most cost effective method to the CSWM service area.



## ▶ **FUTURE PLANS IN COMOX VALLEY**

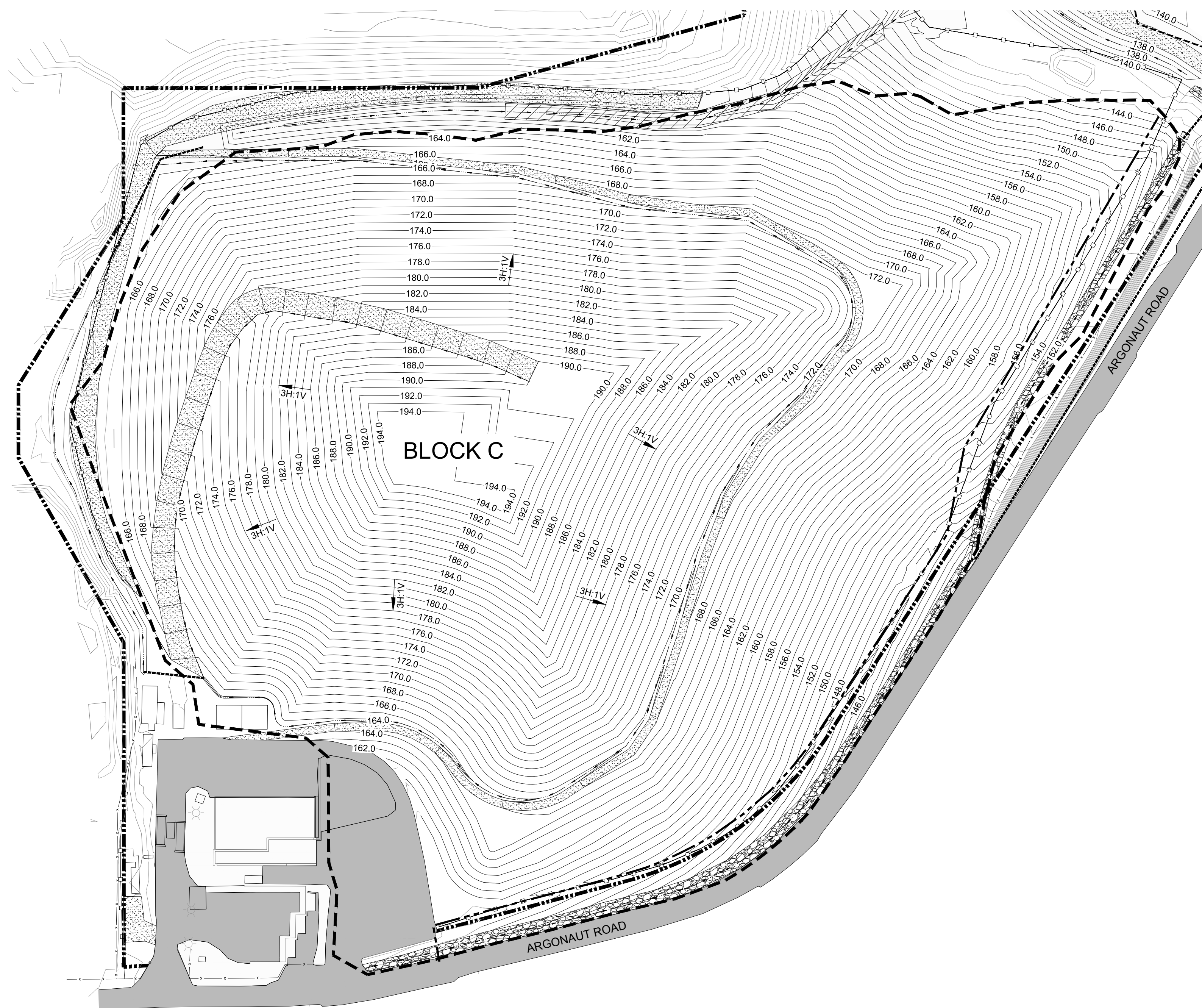
Meanwhile, the Comox Valley Waste Management Centre has seen a large-scale investment to meet the regulatory requirements for a modern landfill, allowing it to meet standards while accepting increased waste volumes.



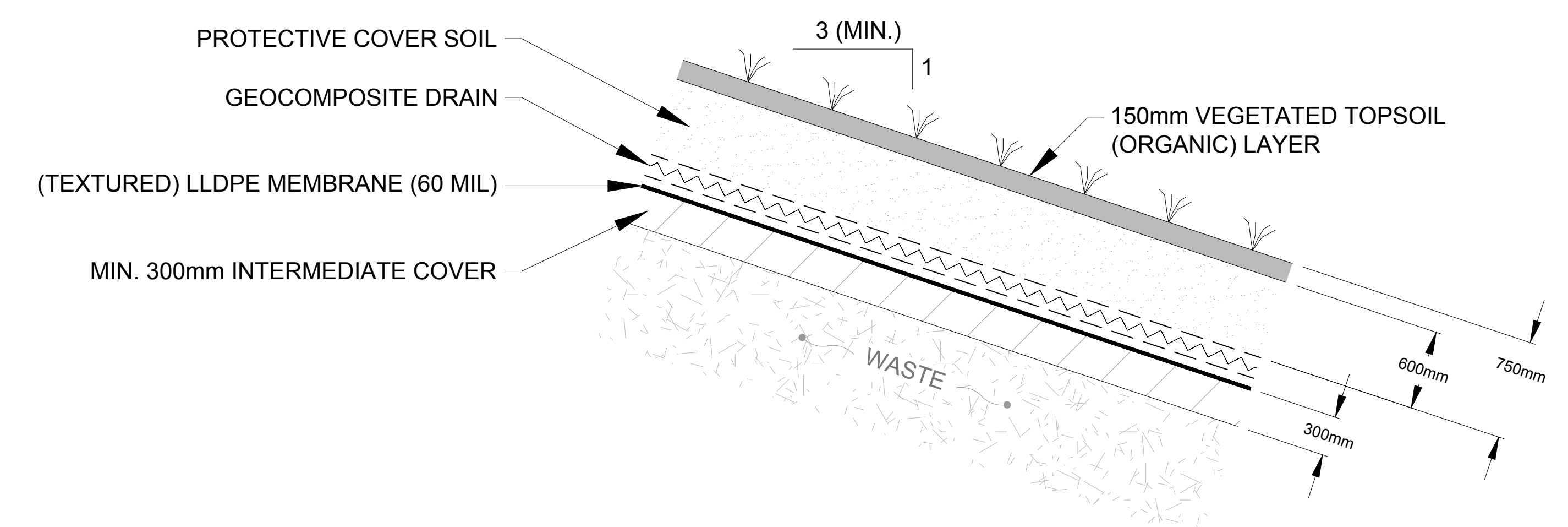


# FINAL CONTOUR PLAN

Once the landfill is closed, it will be capped with a final cover system. In addition to engineered storm water controls throughout the site, the final slopes of the capped landfill will allow precipitation to run off, mitigating erosion.



## FINAL COVER SYSTEM



► The schematic diagram above shows a cross-section of the different layers of materials that will go into the final cover system for the landfill.

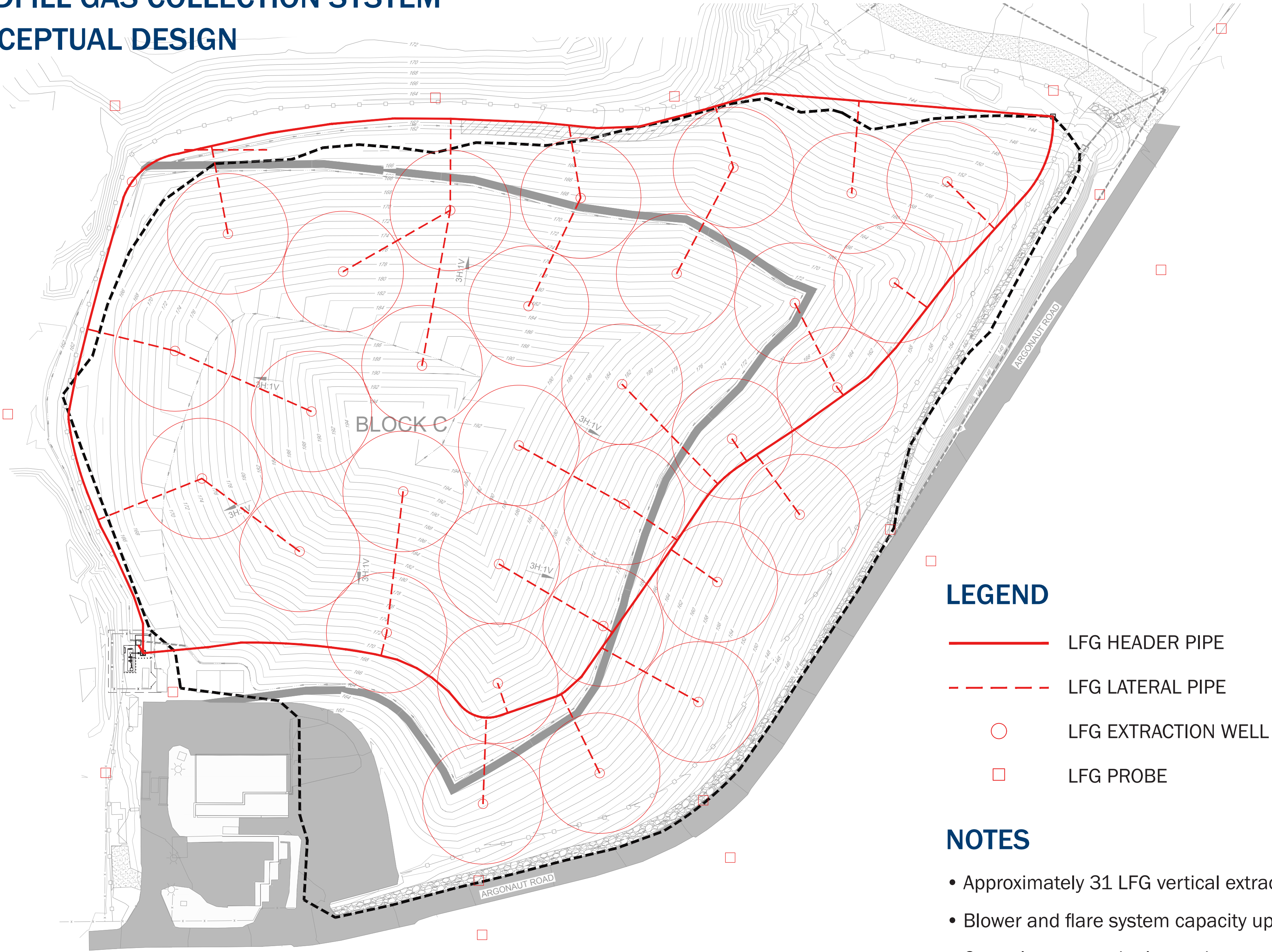


# LANDFILL GAS COLLECTION PLAN



The BC Landfill Gas (LFG) Management Regulation aims to reduce greenhouse gas emissions and optimize gas recovery from solid waste landfills. CSWM is proposing an alternative schedule to achieve the intent of the regulations in a way that aligns with closure construction activities.

## LANDFILL GAS COLLECTION SYSTEM CONCEPTUAL DESIGN



### LEGEND

- LFG HEADER PIPE
- - - LFG LATERAL PIPE
- LFG EXTRACTION WELL
- LFG PROBE

### NOTES

- Approximately 31 LFG vertical extraction wells
- Blower and flare system capacity up to 500 m<sup>3</sup>/hr
- Control system to be located near public area

CSWM is seeking an extension to begin construction of the landfill gas collection system in 2021, and complete construction in 2023 concurrent with final closure of the landfill.

A final geomembrane cover will also be installed at that time, creating a barrier layer on top of the landfilled waste, which will help to contain landfill gas.

Combining the installation of the LFG collection system with the installation of the geomembrane cover will allow for efficient collection of landfill gas, at the time when the site reaches its annual peak rate of gas generation.

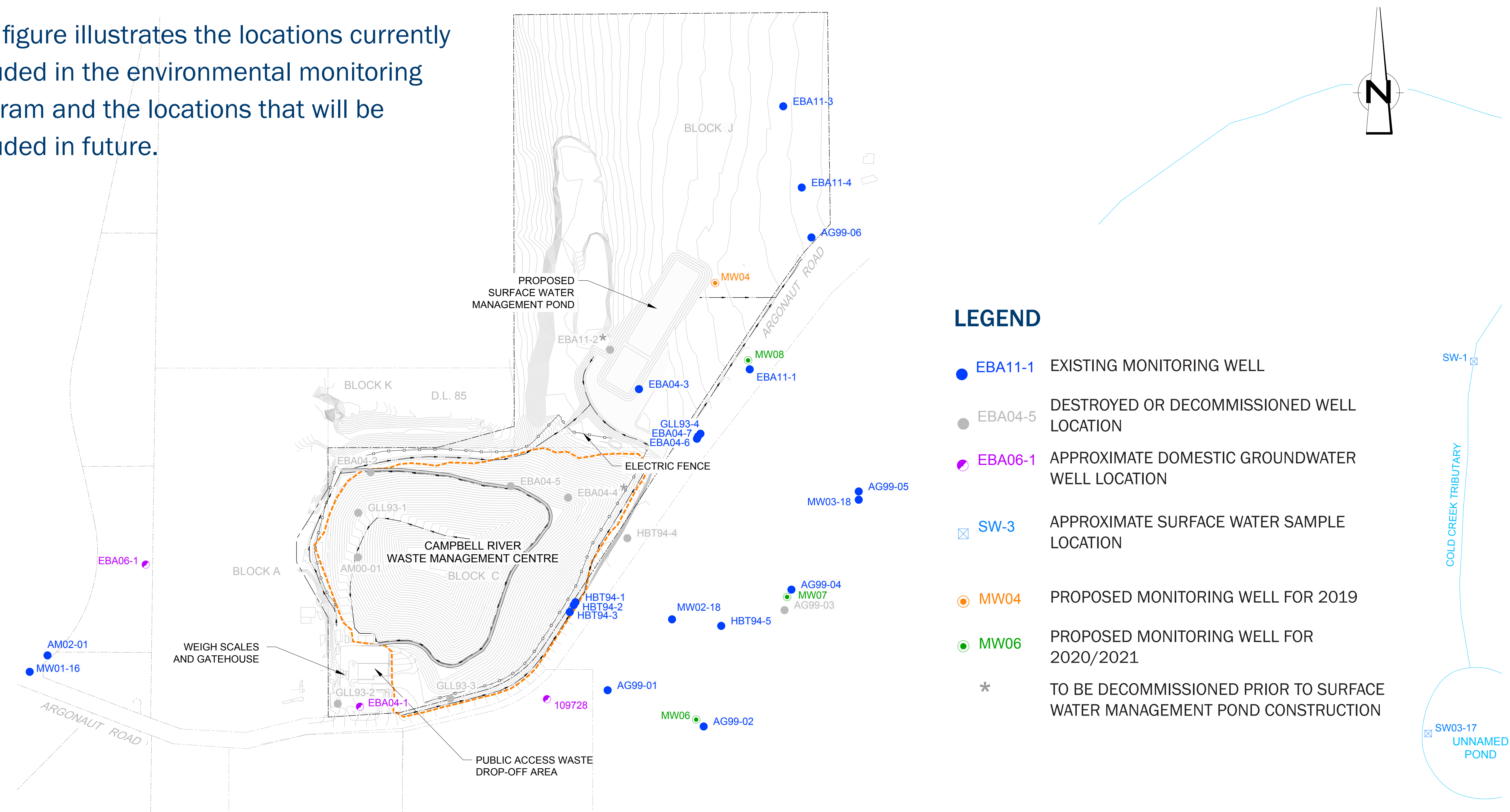


# ENVIRONMENTAL MONITORING PLAN



When the landfill is closed, the CSWM service must continue to carry out proper maintenance and environmental monitoring of the site in accordance with Ministry of Environment and Climate Change Strategy requirements. Groundwater and surface water sampling is currently carried out at the site on a quarterly basis.

► This figure illustrates the locations currently included in the environmental monitoring program and the locations that will be included in future.





# SEEKING APPROVAL FOR SUBSTITUTION

Sections 19 and 20 of the British Columbia Landfill Gas Management Regulation (LFG Regulation) describe how a substituted requirement can be granted. The contents of Sections 19 and 20 of the LFG Regulation are as follows:

## ► SECTION 19 – SUBSTITUTED REQUIREMENTS

- Substituted requirements under the LFG Regulation may be granted in the following ways:
  - » The Director of the BC Ministry of Environment and Climate Change Strategy (ENV) may order a substituted requirement under their own initiative
  - » An application may be made for a substitution by the site owner
- In both scenarios, the overall intent of the LFG Regulation must be met



## ► SECTION 20 – APPLICATION FOR SUBSTITUTED REQUIREMENTS

- To apply for a substituted requirement, the following process is followed:
  - » Submit an application form for a substituted requirement to ENV. Back-up documentation along with the application form is included with the submission.
  - » Post a copy of the application form at the entrance of the landfill for 30 days. This must occur within 15 days of initial application submission.
  - » Publish a notice of application in one or more local newspapers
  - » Notify to ENV the dates the application was posted at the landfill and the notice was published in the newspaper(s)
  - » Public consultation to take place within the 30 day period
  - » Provide additional information to ENV as requested
  - » Application is either granted or refused by ENV



# WHAT THIS MEANS FOR YOU

The average area resident will see very little change when the landfill is closed, as a transfer station will continue to operate at the site. You will still be able to drop off your household waste, recyclables and yard waste.

## ► TRANSFER STATIONS ACCEPT:

- Regular household waste
- Recyclables ► plastics, metal packaging, paper, cardboard and more
- Residential roofing materials
- All clean wood waste ► unpainted lumber, pallets and wood shingles
- Yard waste ► branches, leaves, grass clippings and kitchen waste (must be in bio-degradable bags)
- Scrap metal
- Large or small appliances
- Mattresses
- Construction waste ► wood waste, and gypsum coated with material that makes it unsuitable for recycling
- Household hazardous waste ► household products marked flammable, corrosive or poisonous, and compressed gas

## ► IF YOU...

- Have curbside collection ► your household waste, yard waste and recyclables will continue to be picked up as scheduled
- Drop off your household, yard waste and recyclables at the Campbell River landfill ► you can continue to do so at the transfer station
- Are a commercial waste management company ► you can continue bringing waste to the Campbell River transfer station

